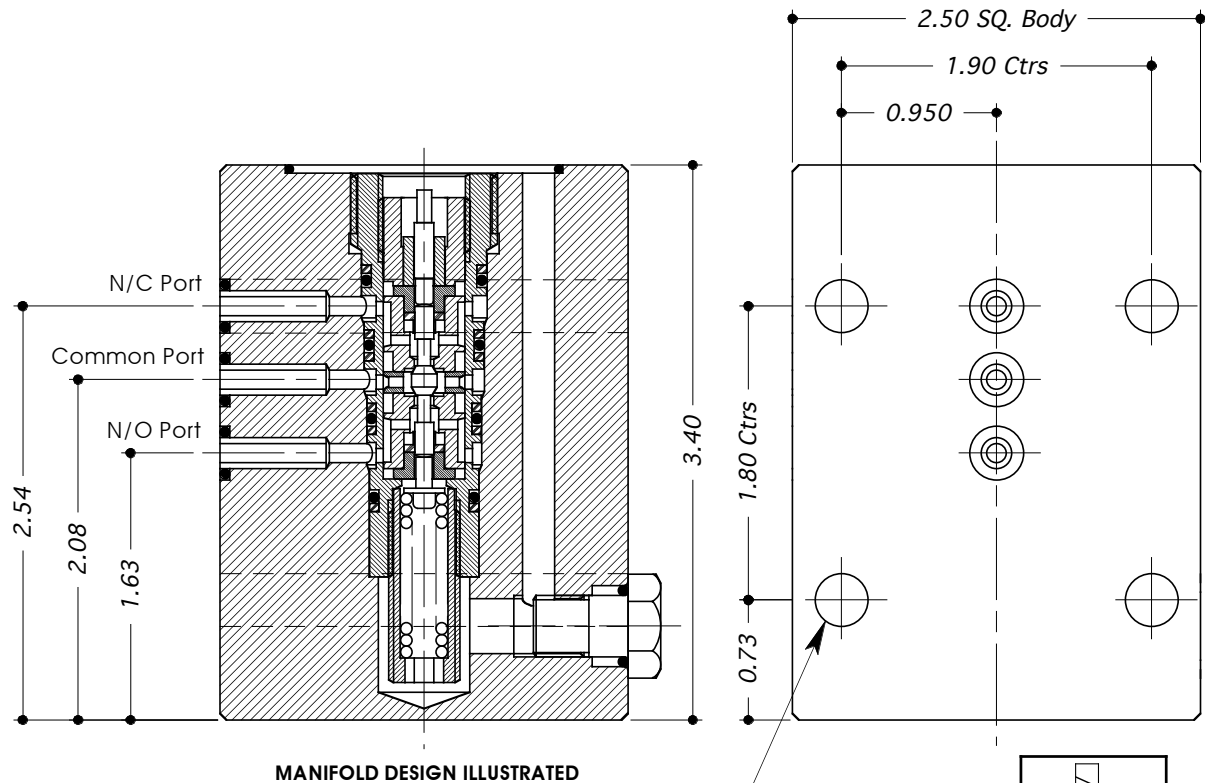


CARTRIDGE SOLENOID VALVE TYPE: CS20



- 2 POSN / 3 PORTED STAINLESS STEEL (316 / 1.4404) VALVE FOR SUB-SEA APPLICATION.
- SUITABLE FOR LIQUID USE.
- FITTED WITH "HARD" SEATS.
- SOLENOID ACTUATION TYPE - SEE SECTION 12 FOR DETAILS.
- ALL DIMENSIONS IN INCHES.

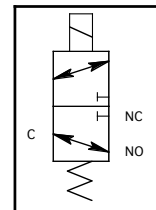


MANIFOLD DESIGN ILLUSTRATED

N/C = Normally Closed Port
N/O = Normally Open Port

4 off Fixing Holes
(plain) for M8 bolts

Circuit
Symbol



This Model can be supplied as a "non-standard" fitted with either 1/4" or 3/8" (BSP or NPT threaded ports). Ask for ordering details.

| TECHNICAL SPECIFICATION | | ORDERING EXAMPLE |
|-------------------------------|--|------------------|
| Valve Type: | CS20 | CS20 |
| Porting / Connection Options: | M = Manifold | M |
| Solenoid Thruster Options: | SW = Sub-Sea | SW |
| Max. Working Press: Liquid | 10,000 psi | 10K |
| Valve Seat Mat'l: Liquid | Stainless Steel - 431/1.4057 | |
| Seal Material: | Viton (other materials available by request) | |
| CV Value: | 0.1 | |
| Dry Weight: (kg) | 2.0 | |
| Working Temperature Range: | -10°C to +70°C | |